

ARCHI-NEWS.EU[®] 2025 *Special* edition





EDITORIAL

By Jacques ALLARD *Chief Editor*



We are excited to present the newest issue of our **ARCHI-NEWS** magazine.

Dear readers,

It is with great enthusiasm that I present this special edition of Archi-News, a tribute to the extraordinary world of architecture and design. Over the years, Archi-News has been a beacon of inspiration, showcasing the most groundbreaking projects and visionary minds shaping our built environment. This edition is no exception.

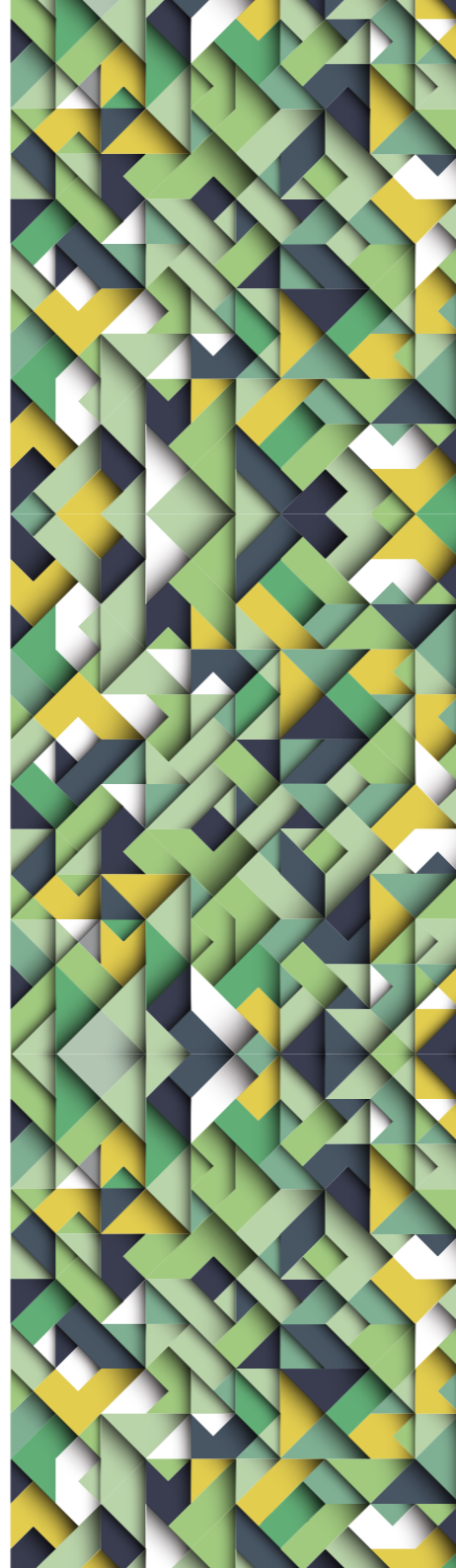
Among the highlights, we explore the serene Hudson Valley Residence by HGX Design, blending natural beauty with cutting-edge design. We journey through the majestic elegance of Mieke Van Herck's Belgian residences and delve into the sustainable brilliance of DevolderArchitecten's villas in Sainte-Maxime. Projects like the Grand Hotel Straubinger by BWM Designers & Architects demonstrate how history and modernity can coexist in perfect harmony.

Each project featured here is a testament to the transformative power of architecture - serving as a dialogue between culture, community, and environment. Let this edition inspire you to envision design as a force for good, driving sustainability, innovation, and human connection.

Thank you for being a part of the Archi-News journey. Together, let us continue to celebrate the architecture that shapes our world and inspires our future.

Warm regards,

Jacques ALLARD, Chief editor Archi-News
Director Archi-World / ALLARD BV



CONTENT

- 02 ▶ **EDITORIAL** By Jacques Allard
- 03 ▶ **CONTENT**
- 03 ▶ **COLOPHON**
- 04 ▶ **ACPV ARCHITECTS:** Design penthouses, Beijing
- 10 ▶ **HGX DESIGN:** Hudson Valley Residence, Germantown
- 16 ▶ **MIEKE VAN HERCK ARCHITECTS:**
 - 17 · Residence VN, Tremelo
 - 20 · Residence EB, 's-Gravenwezel
 - 22 · Residence ST, Antwerp
- 26 ▶ **DEVOLDERARCHITECTEN:**
 - 26 · Villa "The Soul", Sainte-Maxime
 - 30 · Villa "CATS", Sainte-Maxime
- 34 ▶ **BWM DESIGNERS & ARCHITECTS:** The Grand Hotel Straubinger, Austria
- 42 ▶ **TJIP INTERIOR ARCHITECTURE:**
 - 42 · Cosmopolitan Penthouse, Ostend
 - 44 · Oceanfront Apartment, Groenendijk
- 46 ▶ **TEN ARCHITECTS:** House DC - Kalmthout, Belgium
- 50 ▶ **STEPHAN MARIA LANG ARCHITECTS:** A residence, Munich
- 54 ▶ **JEAN BAPTISTE PIETRI:** la Capitainerie, Londe-les-Maures, France

COLOPHON

Bischoffsheimlaan 39/4, 1000 Brussel / Tel. +32 11 37 56 13
www.archi-europe.com / press@archi-press.eu

- ▶ **LAYOUT** Vinckx Grafische Vormgeving
- ▶ **PUBLISHER** Jacques Allard
- ▶ **CHIEF EDITOR** Jacques Allard
- ▶ **EDITOR** Maxime Jonvelle
- ▶ **GUEST EDITOR** Julie Allard

Special
edition

COVER



The Grand Hotel Straubinger
Bad Gastein, Austria

BWM Designers & Architects

Photo credits © BWM Designers & Architects

ARCHI-EUROPE
GROUP®
www.archi-europe.com



Member of VJV



VLAAMSE JOURNALISTEN VERENIGING

Copyright 2025 Archi-Europe nv / ALLARD BV ARCHIWORLD
all rights reserved.



ACPV ARCHITECTS, Milano

Antonio Citterio, Patricia Viel with Chung-Yi Yang, and Lorenzo Polli, Yuxi Chen, Giuseppe Molteni.

Design penthouses for Dongzhimen 8, Beijing

The residences offer a one-of-a-kind living experience in one of the most sought-after locations in Beijing, China

ACPV ARCHITECTS Antonio Citterio Patricia Viel reveals the interiors of the Dongzhimen 8 penthouses in Beijing, as part of the restyling of the more than 30-floor residential building. Combining a rich mix of textures and a selection of high-quality materials, the project comprises a total of 21 penthouses on the topmost seven floors of the building, with a unique design for three different residence types.

“The penthouses are characterized by a series of exceptionally wide window openings that open the residences to panoramic views of Beijing. The custom designed seating in the windows offers spaces where people can relax, unwind, and explore a new relationship with the city,” says architect Antonio Citterio, Chairman of ACPV ARCHITECTS.

The design of the apartments is accentuated by clear horizontal lines in the wooden wall paneling: the upper and lower edges of the window openings run through the entire apartment to visually elongate the space, and to make residents feel at ease.

“Following ACPV ARCHITECTS’ approach to interiors, the penthouses feature a curated selection of materials, such as marble in the bathrooms and textured clay detailing on the ceilings with nature motifs,” says architect Patricia Viel, CEO of ACPV ARCHITECTS.

The penthouses’ furniture selection comprises world-renown Italian brands, including pieces designed by Antonio Citterio. The penthouses’ walk-in closet by B&B Italia, and sofas by Maxalto and Flexform add a touch of timeless refinement to the living spaces.

“The focal point of the apartments are the shared spaces that foster interaction among residents and their guests. For example, the kitchen by Arclinea provides generous spaces where people can spend time with their friends and family,” says Chung-Yi Yang, Partner of ACPV ARCHITECTS, in charge of the project for Dongzhimen 8.

The Dongzhimen 8 penthouses are the latest ACPV ARCHITECTS project that embodies the practice’s attention to detail in the design of refined residential interiors that **respond to people’s needs while prioritizing their well-being**. Recent residential interiors projects of the firm include the La Bella Vita and the Treasure Garden residences in Taichung.

The most compact residence, “FLAT A”, has been conceived as a yacht-like living space that is defined by an openness to its surroundings. Inspired by naval architecture, the design features inlaid parquet, and smooth rounded details. The curved walls between the kitchen and the living areas both separate and connect the two spaces for optimized use. Italian green marble wall cladding, and the use of wood creates a warm and calm atmosphere through natural colors.



Flat A



In contrast, the design of “FLAT B” includes elm wood wall paneling and elegant clear stone flooring, while the prominent use of leather, and its soft texture and warm hues, evoke a pleasant atmosphere. The separation between the living room and the kitchen can be flexibly adjusted according to residents’ needs. The living room’s feature wall creates a strong horizontal continuity between the leather shelving and the panoramic window.



Flat B

▶ For more information: www.acpvarchitects.com
Photo credits © ZhuHai

The design of the four-bedroom “FLAT C” is characterized by teak wall paneling, stone flooring and shelving by Rimadesio that enhances the sophisticated character of the living space. The large living room and dining room of “FLAT C” provide ample spaces where residents can spend time in the company of guests. The 65-sqm master bedroom, complemented by a 20-sqm bathroom and his and her walk-in closets, guarantees maximum privacy by a distanced separation from the living area.



Flat C

The Dongzhimen 8 penthouses are the latest ACPV ARCHITECTS project that embodies the practice’s attention to detail in the design of **refined residential interiors** that respond to people’s needs while prioritizing their well-being. Recent residential interiors projects of the firm include the La Bella Vita and the Treasure Garden residences in Taichung. ◀





HGX Design

New York, United States
Hudson Valley Residence, Germantown

HGX Design introduces Hudson Valley Residence, a ground-up home built on a ridge overlooking the Catskill Mountains. The home was commissioned for a client with multiple residences who envisioned a retreat providing scenic views of the surrounding mountains, serenity, and a gathering place for family. The centerpiece of a 14 hectare property, the elongated home runs from north to south on the highest point of the property, with views of the mountain range to the west.

Set among the rolling hills of primarily rural farmland, access to Hudson Valley Residence II winds its way up a hillside to a front entry court on top of a ridge. Expansive glass panelling immediately draws attention into the home, while simultaneously framing the mountainous horizon beyond. In contrast to the vertical ascent, and the massive verticality of the mountain range to the west, the home itself extends horizontally along the entirety of the ridge. Comprised of a series of utilitarian, simple form buildings with a repetitive vertical rhythm, the home's elongated footprint is reminiscent of the long, low-lying characteristics of agricultural buildings that dot the surrounding regional landscape.

“There are many ways to form relationships with nature, including by juxtaposing or by blending in,” says Hal Goldstein, AIA, Founder and Creative Director of HGX. “After exploring multiple design possibilities, we decided to embrace this project as **a sort of typology of its own**, without any preconceptions of what that typology must look like.”





A seamless blend of earth and sky

“The house meets the sky in a very minimal way, while remaining lightly seated on the ground,” notes Goldstein. “It’s a predictable system that flows like a piece of music, with subtle tone-on-tone interactions with the elements that bring the colors and material palette to life throughout the day.”

Devoid of any roof overhang, the cedar siding, the glass panels, and their interactions with the elements collectively ensure minimal separation between the interior and exterior, and contribute greatly to the ambiance of the residence. On hot, sunny days, natural light filters through the expansive windows to interact with the silvery wash of the interior’s custom-stained walnut flooring, infusing cooler accents of blue into the interior. At night, or when the weather outside is cooler, warmer tones emerge from the color and material palette.

Through its floor-to-ceiling windows, and an elongated skylight, the home is laid out to capture morning sunlight from the east, and the setting sun to the west, helping define distinct spaces within a wide-open floorplan.

“Daylight casts shadows throughout the home, creating natural separations and boundaries that provide a sense of privacy in the smartly designed spaces,” explains Goldstein. “Privacy is created by distance, and every step of that distance presents a unique moment, whether it be a view, a piece of art, or a ray of light projecting onto a wall.”

“The land, the views, and the architecture **combine in ways that contribute to a very spiritual place,**” concludes Hal Goldstein. “The overall flow is truly musical, like individual notes of a musical composition, which was the goal of our work from the beginning.” ◀



For more information: www.hgxdesign.com
Photo credits © Scott Frances with aerial shots by Peter Aaron





Mieke Van Herck Architects

Unveiling Elegance Architectural Masterpieces

In the realm of contemporary architecture, where **the fusion of innovation and elegance defines success**, Mieke Van Herck Architects stands as a beacon of excellence. Known for her distinctive style that seamlessly blends austere modernity with warm, state-of-the-art interiors, Mieke Van Herck has carved a unique niche in Belgian architecture. Her projects transcend mere construction, creating harmonious universes where architecture, interior, and garden design converge flawlessly.

Mieke Van Herck's work is characterized by a meticulous selection of premium materials, intricate detailing, and a thoughtful integration of indoor and outdoor spaces. Each project is a testament to her philosophy that a home should be a true reflection of its inhabitants' lives, beautifully narrating their stories through its design and functionality. As Mieke Van Herck Architects prepares to expand its influence beyond Belgium, embarking on international residential projects, their commitment to innovation and excellence remains unwavering, upheld by a dedicated, multidisciplinary team.

In this edition of Archi-News, we are thrilled to present three exemplary projects by Mieke Van Herck Architects. These projects not only exemplify her signature style but also highlight her ability to create living spaces that are **both striking and profoundly personal**. Stay tuned as we delve into the details of these architectural masterpieces, each an embodiment of Mieke Van Herck's visionary approach to modern living.

May your home be your legacy.



Residence VN, Tremelo

Where classic stateliness and contemporary luxury meet.

In Tremelo, Belgium, Mieke Van Herck Architects realized a mesmerizing villa that seamlessly combines classic stateliness with contemporary luxury. Characteristic features include an elongated glass façade extending to the upper floor, a pool house offering a strong connection with the garden, a refined wabi-sabi influenced interior, and a boutique dressing area.







Residence EB, 's-Gravenwezel

The abstraction of a country house with a thatched roof into a contemporary residence.

In a quiet neighborhood in 's-Gravenwezel, Belgium, Mieke Van Herck Architects renovated an existing thatched-roof country house. The design harmonizes modern and rural elements, abstracting the traditional house into a unique, contemporary residence. Notable features include a sleek, black pavilion housing the kitchen on a floating platform. The ground floor living spaces are maximized and finished with natural materials such as marble and Pietra dei Medici stone. Highlights include a reception area with an ultra-large sitting area and a stylish, bay-windowed workspace reminiscent of the original mansion.

Residence ST, Antwerp

As the builder's foreign career ended, Mieke Van Herck Architects began designing Residence ST in Belgium. The villa features a grand entrance hall with a double staircase, setting a **luxurious tone**. Interiors are meticulously detailed with renowned designs by Minotti and Tribù, using natural stone throughout, except for ceramics in the children's room.

Classic elements like mouldings and high ceilings blend with a contemporary style. A dark, warm color palette creates a sophisticated atmosphere, highlighted by black marble, mortex, steel doors, and a circular bathtub. The master bedroom resembles a lavish hotel suite with a chic dressing area.

The basement includes a mancave with a home cinema, pool area, lounge, bar, and gym, featuring custom artwork by Steve Locatelli. The sleek pool house, inspired by Mies van der Rohe's Barcelona Pavilion, includes a kitchen, bar, and seating area, embodying Mieke Van Herck's high-end design.





Conclusion

These three projects—Residence VN, Residence EB, and Residence ST—highlight the exceptional talent and vision of Mieke Van Herck Architects. Each residence not only showcases the firm's signature style but also reflects a deep understanding of how to create spaces that are both innovative and personal. As Mieke Van Herck Architects continues to **push the boundaries of contemporary architecture**, we look forward to seeing more groundbreaking designs that beautifully merge the traditional with the modern, making each home a true reflection of its inhabitants' lives. ◀

▶ For more information: www.mvh-architects.com
Photo credits © mvh-architects



DevolderArchitecten, Kortrijk

Geert Devolder commands form, space, and simplicity—principles that drive him, inspired by the environment. As a modernist, he extracts light and space from designs where they might otherwise be lost in layers, patterns, and other decorative elements. A fervent advocate of sketching, Devolder relishes the challenge of design. His work features clean lines, uninterrupted by superfluous elements, and the precise positioning of volumes and plans.

Four decades ago, Geert Devolder founded his architectural firm, embracing the myriad challenges expected in the field. The firm’s ethos rejects the notion of avoiding difficulty, believing that ease does not equate to joy.

In this edition of Archi-News, we are thrilled to present two remarkable projects by DevolderArchitecten. Located in Sainte-Maxime, these projects not only **harmonize with their surroundings** but also **enhance the natural beauty of the French Riviera**. Each stands as a testament to the architect’s mastery of modernist principles, where light, space, and simplicity converge to create timeless elegance.



Villa “The Soul”, Sainte-Maxime

Nestled in the hills of the French Côte d’Azur, Villa “The Soul” offers breathtaking views of a vibrant bay with cerulean waters. **Seemingly carved from the rocks**, the villa’s rooftop garden, lush with native plants, conceals the true nature of this luxurious modern home.

The sharply sloping site tested the architect’s skill, evident as you descend the steep driveway between natural stone walls past the corten steel gate. You might choose to bypass the main entrance, walking under the kitchen to the terrace of the sleeping quarters. Gazing through binoculars from the kitchen at the chaotic dance of sailboats and other activities on the water is undeniably addictive.

The living room, adorned with a feature wall of book-matched marble, is bathed in light. Even in winter, it’s a cozy retreat, with the fireplace chimney peeking through irises and spurflowers. The cleverly positioned Werner Pantoni chandelier appears to hang in two separate spaces simultaneously.

Embracing the terraces around the infinity pool, **the villa provides protection** against the sometimes fierce mistral winds. The view over the infinity pool is not reserved for the terraces alone; from the master suite’s bathroom, you can also enjoy the reflections on the pool’s surface. This challenging design celebrates the Côte d’Azur in both color and form.

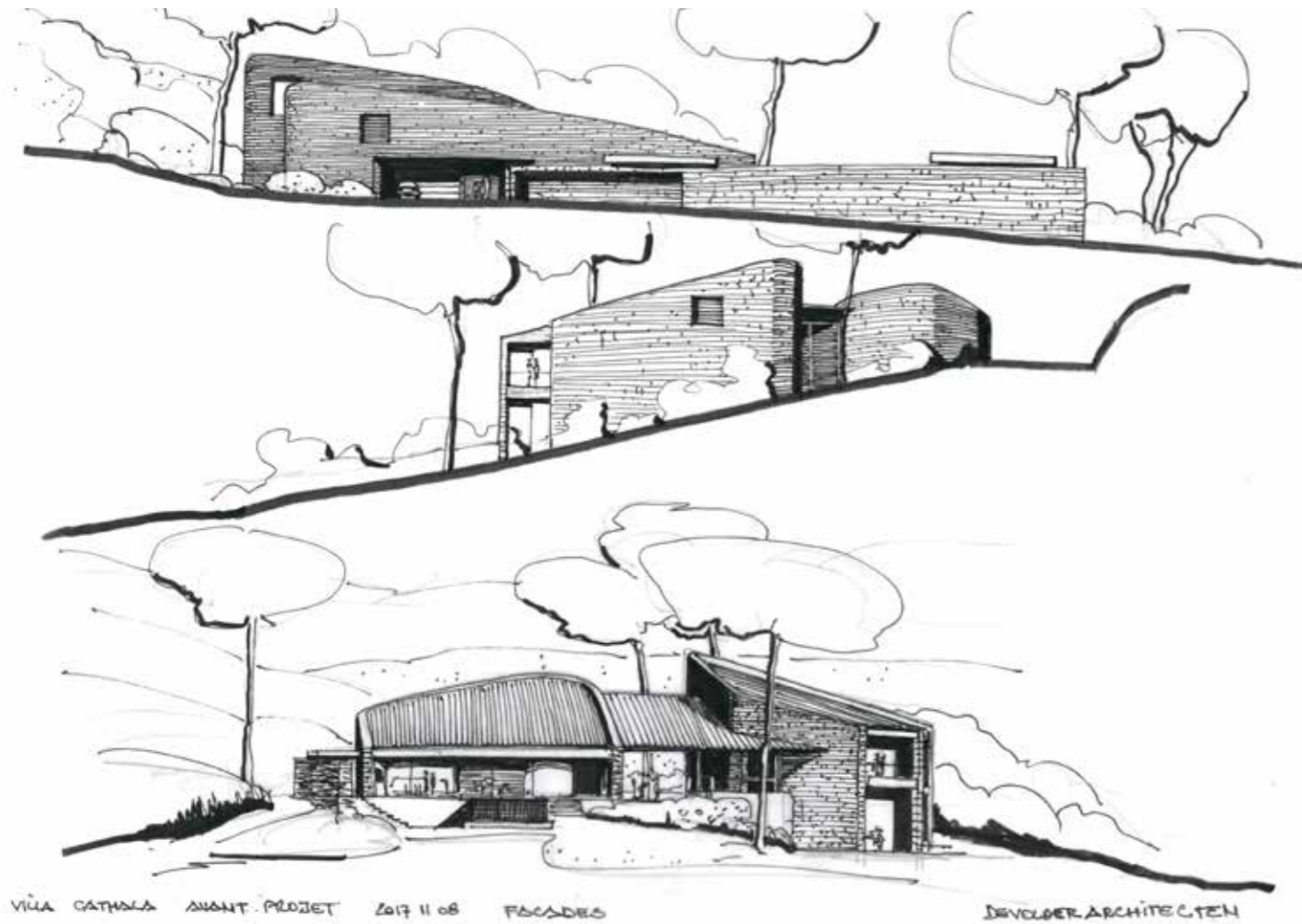






Villa "CATS", Sainte-Maxime

Villa CATS seamlessly blends with the landscape, its rounded stone forms echoing the nearby historic lighthouse. The aim was to **fully exploit the potential of the site**, transforming an underutilized existing villa into a vantage point capturing breathtaking views of the stunning peninsula where St-Tropez is nestled.



The overgrown shrubs and plants have been replaced with a landscaped garden of Mediterranean flora, carefully sculpted around ancient parasol pines. The challenges overcome during the project have enriched its outcome. ◀

▶ For more information: www.devolderarchitecten.be
Photo credits © DevolderArchitecten



BWM Designers & Architects

Gastein, Austria

Reviving Elegance: The Grand Hotel Straubinger

In the heart of Austria's historic Bad Gastein, the Grand Hotel Straubinger stands as a testament to timeless elegance and architectural revival. Meticulously restored by BWM Designers & Architects, this landmark project epitomizes the seamless fusion of historical preservation and contemporary luxury. With its grand reopening in autumn 2023, the Straubinger has been transformed into a sophisticated retreat that celebrates its storied past while embracing modern sensibilities.

A Harmonious Blend of Past and Present

The Grand Hotel Straubinger's architectural narrative is rooted in preserving its heritage while carefully integrating modern elements. The collaboration with the Federal Monuments Office and local authorities ensured a sensitive rehabilitation process, safeguarding the building's historical fabric. The result is a structure that exudes both the charm of its origins and the sophistication of contemporary design.

From the preserved patina on the walls to the careful restoration of original fixtures, every detail pays homage to the hotel's legacy. The interior design by BWM Designers & Architects reflects an exquisite balance of historical authenticity and modern comfort, inviting guests to experience a journey through time.

Luxurious Amenities and Thoughtful Design

The Grand Hotel Straubinger offers a world-class hospitality experience tailored to the discerning traveler. Its crown jewel, the **Straubinger Saal restaurant**, reimagines Austrian-French cuisine with a modern twist. The exclusive spa, divided into seven concept worlds, provides a holistic escape designed to rejuvenate both body and mind. Guests can immerse themselves in panoramic views of the Gastein Valley and the iconic Bad Gastein waterfall, reinforcing the hotel's harmonious connection with its natural surroundings.



Revitalizing Straubingerplatz

Located in the heart of Bad Gastein's historic center, the Grand Hotel Straubinger has become a catalyst for the revitalization of **Straubingerplatz**. Once a dormant square, it has been reimagined as a vibrant hub for locals and visitors alike. The addition of a stunning pool landscape, offering sweeping views of the valley, seamlessly integrates the hotel into the town's cultural and natural fabric.

This revitalization effort goes beyond aesthetics; it embodies a commitment to community and environmental sustainability. By embracing inclusive design principles and prioritizing ecological practices, the project contributes significantly to the socio-economic and environmental landscape of Bad Gastein.

Sustainability at Its Core

Sustainability lies at the heart of the Grand Hotel Straubinger's restoration. Guided by a philosophy of reuse and conservation, BWM Designers & Architects implemented strategies to preserve as much of the building's original material as possible. Historic walls, doors, and fixtures were meticulously restored, reducing waste and maintaining the authenticity of the structure.

The approach also extended to energy-efficient systems and carbon footprint reduction. By preserving the building's historical integrity while incorporating modern sustainable technologies, the Grand Hotel Straubinger demonstrates how luxury and environmental responsibility can coexist.



BWM Designers & Architects

A Team of Visionaries

The transformation of the Grand Hotel Straubinger was made possible by a dynamic collaboration of experts. Spearheaded by BWM Designers & Architects, the project brought together specialists in structural design, fire protection, landscape planning, and interior styling. From **zwei Architekten's** execution planning to **Simma Zimmermann Landschaftsarchitektinnen OG's** landscape design, the diverse expertise of the project partners ensured a holistic approach to the renovation.

The **art concept**, curated by BWM in partnership with Andrea von Goetz, adds an additional layer of sophistication, transforming the hotel into a living gallery that bridges the past and present.



BWM Designers & Architects



A New Era of Hospitality

The Grand Hotel Straubinger is more than just a luxury retreat; it is a symbol of the enduring relevance of historical architecture in modern hospitality. Its meticulous restoration not only honors its past but also sets a new standard for sustainable, inclusive design in the industry. As guests step into the reimagined spaces, they are transported to a realm where history, art, and luxury converge.

This iconic project reaffirms **BWM Designers & Architects'** position as leaders in the field of narrative design. With a multinational team of over 70 professionals, the firm continues to redefine the boundaries of architecture and interior design, bringing new life to historic spaces across Europe. ◀

▶ For more information about the Grand Hotel Straubinger and the visionaries behind its restoration, visit www.bwm.at/en.

BWM Designers & Architects
pr@bwm.at
+43 664 426 25 00



TJIP Interior Architecture

Two exemplary seaview projects located along the Belgian coast

Founded in 2012 by Jakob Vyncke and Thomas Meesschaert, TJIP Interior Architecture operates out of Belgium with a dedicated team. They focus on residential, hospitality, and project development interiors both locally and internationally.

Their profound connection with the sea has led them to realize numerous weekend residences along the Belgian coast, honing their subtle and refined approach to color, materials, and textures.

This practice has allowed them to master the art of creating serene, tactile interiors that blend seamlessly with their surroundings, achieving a presence in absence that epitomizes their design philosophy.

Cosmopolitan Penthouse in Ostend, Belgium

In the heart of Ostend, the queen of Belgian seaside resorts, TJIP Interior Architecture has crafted a luxurious duplex suite with a metropolitan flair. This penthouse is a **testament to the intricate simplicity** that characterizes TJIP's design approach. The SKY Tower, a cosmopolitan landmark in Ostend, houses this duplex, where the interior design is transparent yet complex in its simplicity.

The penthouse boasts an open lounge area with impressive ceiling height and a hidden staircase leading to private rooms including an office, master bedroom, children's room, guest room, and three bathrooms. The design marries mathematical precision with a dedicated approach to light and texture, creating a high-level, sensible space. The 180-degree beach and sea views are mirrored in the choice of natural materials and calm tones, making the penthouse an ideal place for relaxation and entertaining. The result is **an instinctive interior** that immerses occupants in a serene atmosphere.

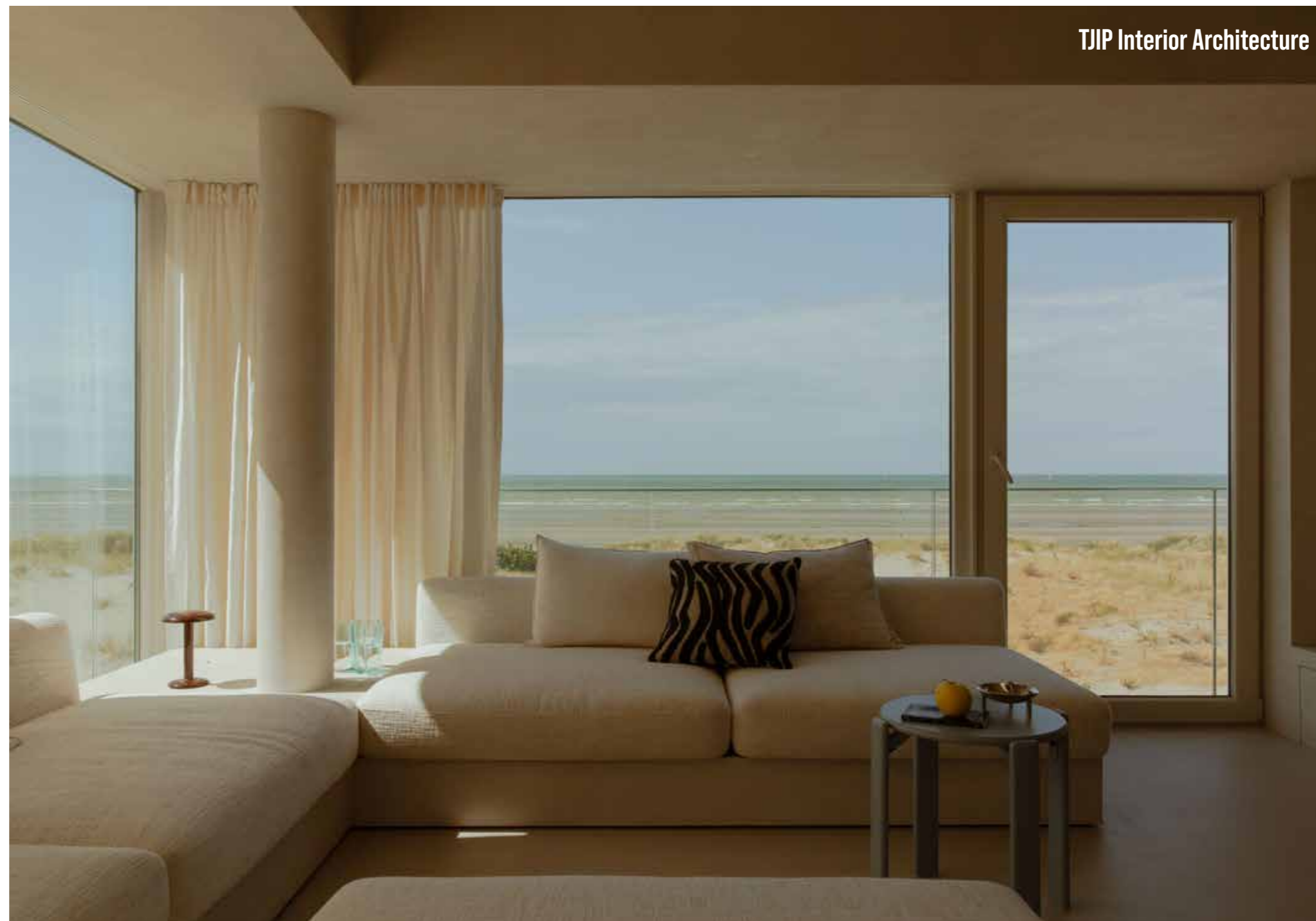


Oceanfront Apartment, Groenendijk, Belgium

On the Belgian seafront between Oostduinkerke and Nieuwpoort, TJIP Interior Architecture has designed an apartment for a family of three. This compact weekend residence on the second floor of a charming multi-family house prioritizes **spaciousness and a coastal experience**. The seamless flow from the entrance hall to the sofa creates a sense of one large, custom-made piece of furniture, enhancing both space and security.

Groenendijk, a unique stretch of seafront promenade free from high-rise buildings, provided the perfect setting for TJIP to transform a compact apartment into a special weekend residence. The corner apartment on the second floor offers uninterrupted views of the beach and sea, emphasizing the connection with the coastal environment. The design integrates color and materials with the surroundings, creating a cohesive and immersive living space that celebrates its seaside location. ◀

▶ For more information: www.tjip.be
Photo credits © Aurore Lameyre





TENARCHITECTS

HOUSE DC - Kalmthout, Belgium

“TENARCHITECTS’ Aesthetic Brilliance: A Refined Dining Oasis Seamlessly Connected to Nature”

In the realm of architectural refinement and aesthetic mastery, TENARCHITECTS, led by the visionary architect Elke Van Goel, unveils a captivating dining and kitchen space that transcends traditional boundaries. This project, a testament to their dedication to creativity, quality, and harmonious design, seamlessly integrates with the beauty of the surrounding garden.

Visionary Excellence by TENARCHITECTS

Under the creative direction of Elke Van Goel, TENARCHITECTS specializes in interiors, architecture, and design. The office embodies a clear vision, blending expertise, meticulous methodology, effective communication, and a keen sense of quality. Dedication, creativity, use of honest materials, and a profound attention to detail define their approach, ensuring exceptional, sustainable, and cost-efficient solutions that resonate perfectly with the environment and users.

Aesthetic Masterpiece: Openness to Nature

The realization of a refined dining and kitchen room and literally open to the garden. The choice of delicate and refined materials, coupled with a harmonious color palette, elevates this project to a realm of unmatched beauty. The space not only functions as a culinary haven but also serves as a visual extension of the enchanting garden. ◀





▶ For more information: www.tenarchitects.be
Photo credits © Tijs Verweken



Stephan Maria Lang Architects, Munich

A residence situated in Munich
House LW27, Munich, Allemagne



Stephan Maria Lang Architects introduce House LW27, a residence situated in Munich, Germany.

In a high class residential area, a large volume residence had to be constructed on a relatively small site. Located next to a sizeable outdoor pool, there was very little space for a garden. Therefore, a decision was made to create a rooftop garden to closely align with the concept of a zero-seal house, meaning sealed areas are given back to nature on the rooftop.

The side borders are hidden by a series of newly planted canopy trees, which provide natural sun protection. On ground level, an open floor plan flows freely from east to west along the pool. Floor to ceiling sliding windows allow inside/outside living throughout the year.



The upper floor features a bedroom area with ensuite bathrooms and separate dressing facilities, and a lush rooftop terrace with whirlpool that is reserved for the hardworking parents.

A sensual minimalistic atmosphere is carefully detailed with great attention to natural and artificial lighting, including a unique light feature in the entree that was designed and handcrafted by world renowned Austrian Bartenbach Light. ◀





▶▶▶ 52 For more information: www.stephanmarialang.com
Photo credits © Sebastian Kolm

Stephan Maria Lang Architects



Jean Baptiste Pietri

Architectural Visionary
Crafting Coastal Marvels and Hillside Harmony

By Chief Editor, Archi-News

Jean Baptiste Pietri, hailing from the southeast of France and a graduate of the École d'Architecture de Paris-Belleville, founded his agency in 2001. Based in Paris, PietriArchitectes, with a team of twenty collaborators, showcases their design prowess across diverse programs, from private residences to waterfront luxury hotels and office towers. Their projects, spanning Île de France and PACA regions, reflect a commitment to architectural brilliance and a harmonious connection with the surrounding environment.





Project: La Capitainerie - A Maritime Oasis

Nestled along the shores of the Mediterranean in La Londe-les-Maures, France, La Capitainerie emerges as a captivating architectural gem, poised against the backdrop of Fort de Brégançon and the azure Mediterranean Sea.

Architectural Vision and Inspiration:

The journey of La Capitainerie began in 2011, with PietriArchitectes triumphing in a design competition. Inspired by previous works in Marseille and La Seyne sur Mer, the project embodies a gentle, playful approach, seamlessly blending with the coastal landscape.

Functional Elegance in Coastal Harmony:

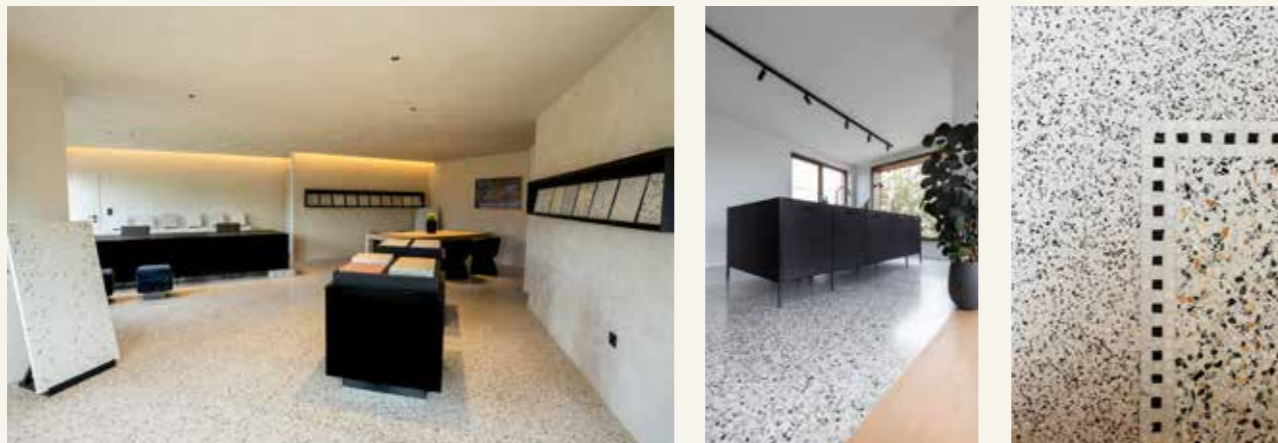
Elevated a meter above ground, La Capitainerie hosts diverse functions, ingeniously distributed across three curved levels. The structure transforms into an elevated street, harmonizing with the coastal allure of La Londe-les-Maures.

Materials Resilient to Maritime Ambiance:

Constructed from a blend of concrete, wood, and stainless steel, the design strategically tackles the challenging marine environment. La Capitainerie stands as a testament to PietriArchitectes' commitment to architectural beauty and environmental resilience. ◀

▶ For more information: www.pietriarchitectes.com
Photo credits © Christian Michel

YOUR TERRAZZO, OUR MASTERPIECE



SEAMLESS AND AUTHENTIC



Together, we explore all possibilities for your interior.

info@venetiaans-terrazzo.be - Gildenstraat 30 - 3550 Heusden-Zolder



Specialist in signs for the visually impaired

Our main message when redesigning public and private spaces is not to lead anyone into a situation of disability.

We do so by making innovative products that are tactile and visually contrasting all while being easy to use, elegant and well designed.

Our growing range of warning studs and guiding lines help the evolution from "caring for" to "ensuring that"...

Are you interested in our range? Get in touch with us ; we will be glad to help!

Call us: +32 478 01 29 57
or send us an email: info@viakan.be





DEGOTTE

CRÉATEUR D'ESPACES

www.degotte.com

Modular Construction

100 % Made in Belgium

Pay us a visit on request !

- Modules for SALE & RENTAL
- Standard or made-to-measure
- From 15 to 5000 m² and more



sales@degotte.com



+32 4 240 05 25

Z.I. Hauts Sarts - Rue de Hermée 246 - 4040 Herstal - Belgium



CONTRIBUTOR OF BUILDING



BAU

January 11–15, 2027
Messe München

World's Leading Trade Fair for
Architecture, Materials, Systems

bau-muenchen.com

SAVE
THE
DATE



mipim[®]

The Global Urban Festival

Pre-opening 10 March

11-14 March 2025

Palais des Festivals, Cannes, France

MIPIM influences and accelerates the transformation of the built environment by crafting a unique, week-long urban festival in Cannes.

Face-to-face discussions, workshops and panels offer inspiration and thought-leadership, while creating opportunities to exchange experiences and drive business and professional growth.

As a reference point for the global real estate industry, MIPIM provides unique access to global capital and concrete solutions for making assets more sustainable and resilient in a rapidly changing world.

Be part of MIPIM

Built by
RX In the business of
building businesses

mipim.com

BENGGLAS
The world's best
Insulating glass

HR++
U = 1,10

Triple
U = 0,80

BENGglas
U = 0,35

U-value = 0,35

www.bengglas.nl/en
+31 (0) 13 534 22 26
info@bengproducts.nl

Scan for
more info

ARCHI-WORLD®



Archi-World has been a leading partner in the construction and architecture sector for over three decades. Our services are built on three core pillars:

1. Consultancy

We provide strategic advice to building material manufacturers, connecting their solutions with the right architects and interior designers. Our expertise helps position innovative solutions and maximize market opportunities.

2. Networking

Archi-World opens doors to an network of professionals in the construction and architecture world, both in Belgium and across Europe. We facilitate valuable connections that foster collaboration and innovation.

3. Personalized Visits & Events

We connect manufacturers directly with architects via personalized visits or by organizing exclusive, tailor-made events. These interactions create unique opportunities to showcase products and build meaningful relationships.

For Over 30 Years: A Trusted Partner for the Architecture Industry



office@archiworld.com