

ARCHI-NEWS.EU

2024 #57





EDITORIAL

By Jacques ALLARD *Chief Editor*



We are excited to present the newest issue of our **ARCHI-NEWS** magazine.

Dear readers,

It is with immense excitement and anticipation that we welcome you to the latest edition of ARCHI-NEWS, your premier source for the most captivating and innovative achievements in the world of architecture.

This edition of ARCHI-NEWS takes immense pride in showcasing a diverse range of breathtaking architectural projects, spanning the grandeur of new residential homes to the cutting-edge design of non-residential leisure and public spaces.

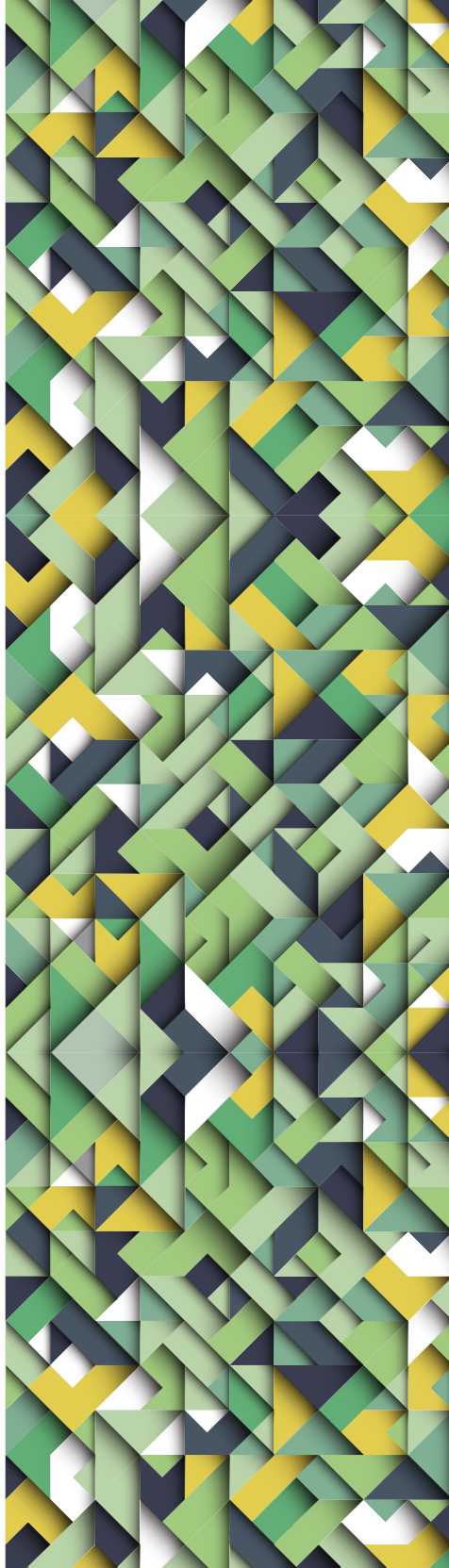
We are particularly thrilled to feature the Hudson Valley Residence by HGX Design, a home that harmonizes with the natural beauty of the Catskill Mountains. Mieke Van Herck Architects impress us with a few remarkable residences that blend classic elegance with contemporary luxury in Belgium. The Milano Innovation District by ACPV ARCHITECTS represents the pinnacle of modern urban design and sustainability, while François Privat Architect's private villa in Uzès exemplifies aesthetic and functional brilliance.

Also in this edition, NBJ Architectes' Montpellier Cultural Hub stands out as a vibrant community space, and Stephan Maria Lang Architects offer a serene Modern Retreat in Munich. DevolderArchitecten's presents two sustainable and breathtaking residences in the south of France, and TJIP Interior Architecture provides elegant interior solutions that enhance both beauty and functionality. Additionally, we feature a portrait and some fine projects of OHarchitecten.

As you journey through these pages, may you find inspiration in the harmony of form and function, the beauty of design, and the relentless pursuit of architectural excellence. Each project is not just a structure, but a narrative brought to life, a testament to the enduring power of human creativity. Embark on a journey of architectural excellence and let the beauty of design transport you to new realms of inspiration.

Warm regards,

Jacques ALLARD
CEO, Archi-Europe / Chief Editor



CONTENT

- 02 ▶ **EDITORIAL** By Jacques Allard
- 03 ▶ **CONTENT**
- 03 ▶ **COLOPHON**
- 04 ▶ **ACPV ARCHITECTS:** Design penthouses, Beijing
- 10 ▶ **HGX DESIGN:** Hudson Valley Residence, Germantown
- 16 ▶ **MIEKE VAN HERCK ARCHITECTS:**
 - 17 · Residence VN, Tremelo
 - 20 · Residence EB, 's-Gravenwezel
 - 22 · Residence ST, Antwerp
- 26 ▶ **DEVOLDERARCHITECTEN:**
 - 26 · Villa "The Soul", Sainte-Maxime
 - 30 · Villa "CATS", Sainte-Maxime
- 34 ▶ **OH ARCHITECTEN:**
 - 36 · Residence ON, Rotselaar
 - 38 · Residence DWW, Wilsele
 - 40 · Residence VWL, Leuven
- 42 ▶ **TJIP INTERIOR ARCHITECTURE:**
 - 42 · Cosmopolitan Penthouse, Ostend
 - 44 · Oceanfront Apartment, Groenendijk
- 46 ▶ **FRANÇOIS PRIVAT ARCHITECTE & NBJ ARCHITECTES:** Sports Hall, France
- 50 ▶ **STEPHAN MARIA LANG ARCHITECTS:** A residence, Munich
- 54 ▶ **AIAR ARCHITECTS:** Fully Restored House Leading, Mariakerke

COLOPHON

Dennendreef 8a, B-3721 KORTESSEM / Tel. +32 11 37 56 13 Fax +32 11 37 56 07
www.archi-europe.com / press@archi-press.eu

- ▶ **LAYOUT** Vinckx Grafische Vormgeving
- ▶ **PUBLISHER** Jacques Allard
- ▶ **CHIEF EDITOR** Jacques Allard
- ▶ **EDITOR** Maxime Jonvelle
- ▶ **GUEST EDITOR** Julie Allard

COVER



Design penthouses for Dongzhimen 8 Beijing
ACPV Architects
Photo credits © ZhuHai

ARCHI-EUROPE
GROUP®
www.archi-europe.com

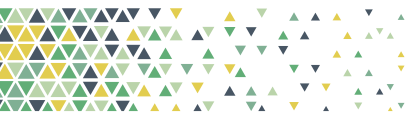


Member of VJV



VLAAMSE JOURNALISTEN VERENIGING

Copyright 2024 Archi-Europe nv / ALLARD BV ARCHIWORLD
all rights reserved.



ACPV ARCHITECTS, Milano

Antonio Citterio, Patricia Viel with Chung-Yi Yang, and Lorenzo Polli, Yuxi Chen, Giuseppe Molteni.

Design penthouses for Dongzhimen 8, Beijing

The residences offer a one-of-a-kind living experience in one of the most sought-after locations in Beijing, China

ACPV ARCHITECTS Antonio Citterio Patricia Viel reveals the interiors of the Dongzhimen 8 penthouses in Beijing, as part of the restyling of the more than 30-floor residential building. Combining a rich mix of textures and a selection of high-quality materials, the project comprises a total of 21 penthouses on the topmost seven floors of the building, with a unique design for three different residence types.

“The penthouses are characterized by a series of exceptionally wide window openings that open the residences to panoramic views of Beijing. The custom designed seating in the windows offers spaces where people can relax, unwind, and explore a new relationship with the city,” says architect Antonio Citterio, Chairman of ACPV ARCHITECTS.

The design of the apartments is accentuated by clear horizontal lines in the wooden wall paneling: the upper and lower edges of the window openings run through the entire apartment to visually elongate the space, and to make residents feel at ease.

“Following ACPV ARCHITECTS’ approach to interiors, the penthouses feature a curated selection of materials, such as marble in the bathrooms and textured clay detailing on the ceilings with nature motifs,” says architect Patricia Viel, CEO of ACPV ARCHITECTS.

The penthouses’ furniture selection comprises world-renown Italian brands, including pieces designed by Antonio Citterio. The penthouses’ walk-in closet by B&B Italia, and sofas by Maxalto and Flexform add a touch of timeless refinement to the living spaces.

“The focal point of the apartments are the shared spaces that foster interaction among residents and their guests. For example, the kitchen by Arclinea provides generous spaces where people can spend time with their friends and family,” says Chung-Yi Yang, Partner of ACPV ARCHITECTS, in charge of the project for Dongzhimen 8.

The Dongzhimen 8 penthouses are the latest ACPV ARCHITECTS project that embodies the practice’s attention to detail in the design of refined residential interiors that **respond to people’s needs while prioritizing their well-being**. Recent residential interiors projects of the firm include the La Bella Vita and the Treasure Garden residences in Taichung.

The most compact residence, “FLAT A”, has been conceived as a yacht-like living space that is defined by an openness to its surroundings. Inspired by naval architecture, the design features inlaid parquet, and smooth rounded details. The curved walls between the kitchen and the living areas both separate and connect the two spaces for optimized use. Italian green marble wall cladding, and the use of wood creates a warm and calm atmosphere through natural colors.



Flat A



In contrast, the design of "FLAT B" includes elm wood wall paneling and elegant clear stone flooring, while the prominent use of leather, and its soft texture and warm hues, evoke a pleasant atmosphere. The separation between the living room and the kitchen can be flexibly adjusted according to residents' needs. The living room's feature wall creates a strong horizontal continuity between the leather shelving and the panoramic window.



Flat B

The design of the four-bedroom "FLAT C" is characterized by teak wall paneling, stone flooring and shelving by Rimadesio that enhances the sophisticated character of the living space. The large living room and dining room of "FLAT C" provide ample spaces where residents can spend time in the company of guests. The 65-sqm master bedroom, complemented by a 20-sqm bathroom and his and her walk-in closets, guarantees maximum privacy by a distanced separation from the living area.



Flat C

▶ For more information: www.acpvarchitects.com
Photo credits © ZhuHai

The Dongzhimen 8 penthouses are the latest ACPV ARCHITECTS project that embodies the practice's attention to detail in the design of **refined residential interiors** that respond to people's needs while prioritizing their well-being. Recent residential interiors projects of the firm include the La Bella Vita and the Treasure Garden residences in Taichung. ◀





HGX Design

New York, United States
Hudson Valley Residence, Germantown

HGX Design introduces Hudson Valley Residence, a ground-up home built on a ridge overlooking the Catskill Mountains. The home was commissioned for a client with multiple residences who envisioned a retreat providing scenic views of the surrounding mountains, serenity, and a gathering place for family. The centerpiece of a 14 hectare property, the elongated home runs from north to south on the highest point of the property, with views of the mountain range to the west.

Set among the rolling hills of primarily rural farmland, access to Hudson Valley Residence II winds its way up a hillside to a front entry court on top of a ridge. Expansive glass panelling immediately draws attention into the home, while simultaneously framing the mountainous horizon beyond. In contrast to the vertical ascent, and the massive verticality of the mountain range to the west, the home itself extends horizontally along the entirety of the ridge. Comprised of a series of utilitarian, simple form buildings with a repetitive vertical rhythm, the home's elongated footprint is reminiscent of the long, low-lying characteristics of agricultural buildings that dot the surrounding regional landscape.

"There are many ways to form relationships with nature, including by juxtaposing or by blending in," says Hal Goldstein, AIA, Founder and Creative Director of HGX. "After exploring multiple design possibilities, we decided to embrace this project as **a sort of typology of its own**, without any preconceptions of what that typology must look like."





A seamless blend of earth and sky

“The house meets the sky in a very minimal way, while remaining lightly seated on the ground,” notes Goldstein. “It’s a predictable system that flows like a piece of music, with subtle tone-on-tone interactions with the elements that bring the colors and material palette to life throughout the day.”

Devoid of any roof overhang, the cedar siding, the glass panels, and their interactions with the elements collectively ensure minimal separation between the interior and exterior, and contribute greatly to the ambiance of the residence. On hot, sunny days, natural light filters through the expansive windows to interact with the silvery wash of the interior’s custom-stained walnut flooring, infusing cooler accents of blue into the interior. At night, or when the weather outside is cooler, warmer tones emerge from the color and material palette.

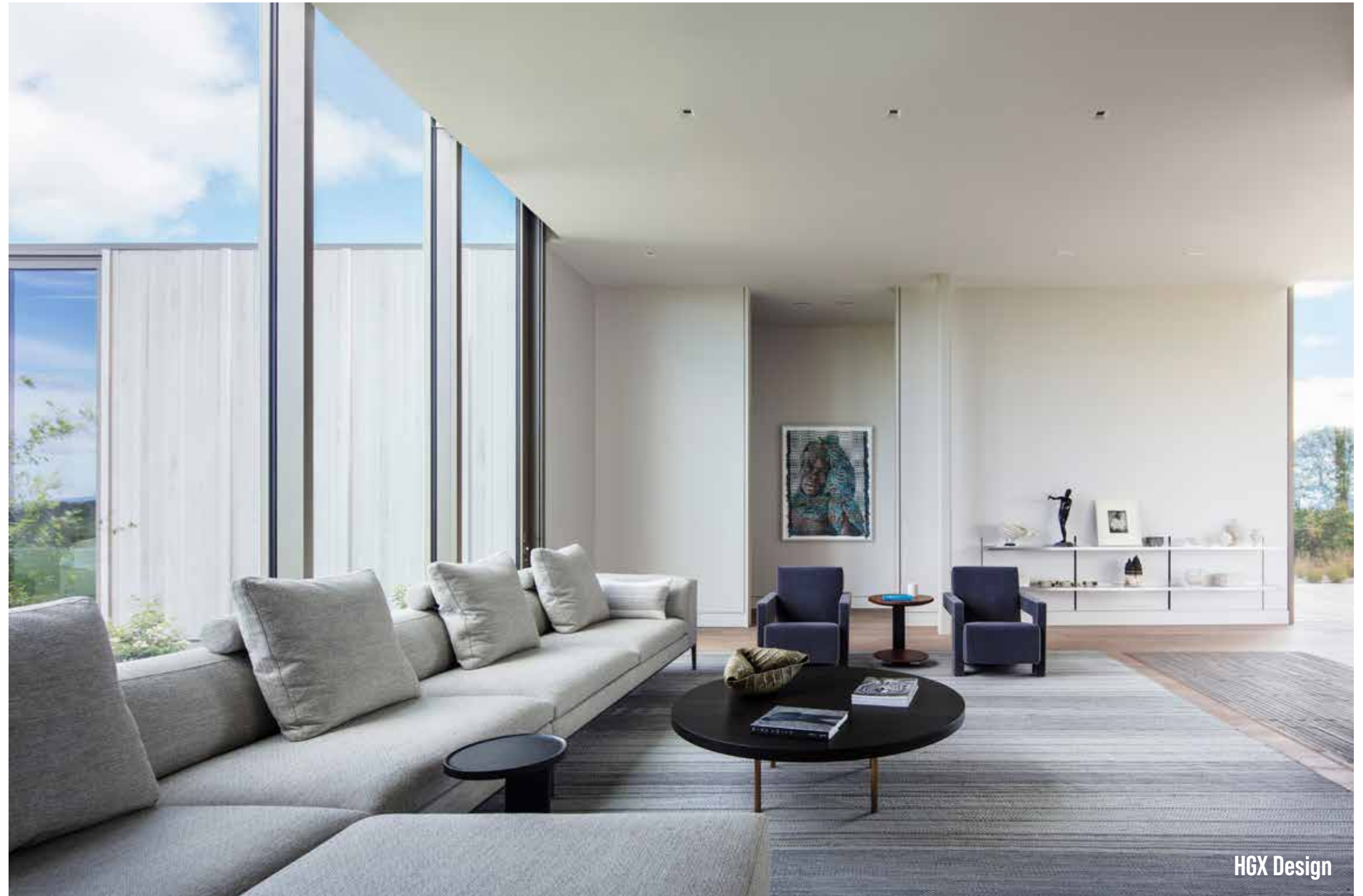
Through its floor-to-ceiling windows, and an elongated skylight, the home is laid out to capture morning sunlight from the east, and the setting sun to the west, helping define distinct spaces within a wide-open floorplan.

“Daylight casts shadows throughout the home, creating natural separations and boundaries that provide a sense of privacy in the smartly designed spaces,” explains Goldstein. “Privacy is created by distance, and every step of that distance presents a unique moment, whether it be a view, a piece of art, or a ray of light projecting onto a wall.”

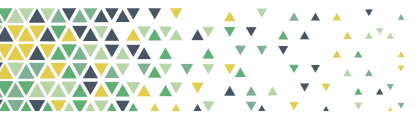
“The land, the views, and the architecture **combine in ways that contribute to a very spiritual place**,” concludes Hal Goldstein. “The overall flow is truly musical, like individual notes of a musical composition, which was the goal of our work from the beginning.” ◀



For more information: www.hgxdesign.com
Photo credits © Scott Frances with aerial shots by Peter Aaron



HGX Design



Mieke Van Herck Architects

Unveiling Elegance Architectural Masterpieces

In the realm of contemporary architecture, where **the fusion of innovation and elegance defines success**, Mieke Van Herck Architects stands as a beacon of excellence. Known for her distinctive style that seamlessly blends austere modernity with warm, state-of-the-art interiors, Mieke Van Herck has carved a unique niche in Belgian architecture. Her projects transcend mere construction, creating harmonious universes where architecture, interior, and garden design converge flawlessly.

Mieke Van Herck's work is characterized by a meticulous selection of premium materials, intricate detailing, and a thoughtful integration of indoor and outdoor spaces. Each project is a testament to her philosophy that a home should be a true reflection of its inhabitants' lives, beautifully narrating their stories through its design and functionality. As Mieke Van Herck Architects prepares to expand its influence beyond Belgium, embarking on international residential projects, their commitment to innovation and excellence remains unwavering, upheld by a dedicated, multidisciplinary team.

In this edition of Archi-News, we are thrilled to present three exemplary projects by Mieke Van Herck Architects. These projects not only exemplify her signature style but also highlight her ability to create living spaces that are **both striking and profoundly personal**. Stay tuned as we delve into the details of these architectural masterpieces, each an embodiment of Mieke Van Herck's visionary approach to modern living.

May your home be your legacy.



Residence VN, Tremelo

Where classic stateliness and contemporary luxury meet.

In Tremelo, Belgium, Mieke Van Herck Architects realized a mesmerizing villa that seamlessly combines classic stateliness with contemporary luxury. Characteristic features include an elongated glass façade extending to the upper floor, a pool house offering a strong connection with the garden, a refined wabi-sabi influenced interior, and a boutique dressing area.







Residence EB, 's-Gravenwezel

The abstraction of a country house with a thatched roof into a contemporary residence.

In a quiet neighborhood in 's-Gravenwezel, Belgium, Mieke Van Herck Architects renovated an existing thatched-roof country house. The design harmonizes modern and rural elements, abstracting the traditional house into a unique, contemporary residence. Notable features include a sleek, black pavilion housing the kitchen on a floating platform. The ground floor living spaces are maximized and finished with natural materials such as marble and Pietra dei Medici stone. Highlights include a reception area with an ultra-large sitting area and a stylish, bay-windowed workspace reminiscent of the original mansion.

Residence ST, Antwerp

As the builder's foreign career ended, Mieke Van Herck Architects began designing Residence ST in Belgium. The villa features a grand entrance hall with a double staircase, setting a **luxurious tone**. Interiors are meticulously detailed with renowned designs by Minotti and Tribù, using natural stone throughout, except for ceramics in the children's room.

Classic elements like mouldings and high ceilings blend with a contemporary style. A dark, warm color palette creates a sophisticated atmosphere, highlighted by black marble, mortex, steel doors, and a circular bathtub. The master bedroom resembles a lavish hotel suite with a chic dressing area.

The basement includes a mancave with a home cinema, pool area, lounge, bar, and gym, featuring custom artwork by Steve Locatelli. The sleek pool house, inspired by Mies van der Rohe's Barcelona Pavilion, includes a kitchen, bar, and seating area, embodying Mieke Van Herck's high-end design.





Conclusion

These three projects—Residence VN, Residence EB, and Residence ST—highlight the exceptional talent and vision of Mieke Van Herck Architects. Each residence not only showcases the firm's signature style but also reflects a deep understanding of how to create spaces that are both innovative and personal. As Mieke Van Herck Architects continues to **push the boundaries of contemporary architecture**, we look forward to seeing more groundbreaking designs that beautifully merge the traditional with the modern, making each home a true reflection of its inhabitants' lives. ◀

▶ For more information: www.mvh-architects.com
Photo credits © xxx

DevolderArchitecten, Kortrijk

Geert Devolder commands form, space, and simplicity—principles that drive him, inspired by the environment. As a modernist, he extracts light and space from designs where they might otherwise be lost in layers, patterns, and other decorative elements. A fervent advocate of sketching, Devolder relishes the challenge of design. His work features clean lines, uninterrupted by superfluous elements, and the precise positioning of volumes and plans.

Four decades ago, Geert Devolder founded his architectural firm, embracing the myriad challenges expected in the field. The firm's ethos rejects the notion of avoiding difficulty, believing that ease does not equate to joy.

In this edition of Archi-News, we are thrilled to present two remarkable projects by DevolderArchitecten. Located in Sainte-Maxime, these projects not only **harmonize with their surroundings** but also **enhance the natural beauty of the French Riviera**. Each stands as a testament to the architect's mastery of modernist principles, where light, space, and simplicity converge to create timeless elegance.

Villa "The Soul", Sainte-Maxime

Nestled in the hills of the French Côte d'Azur, Villa "The Soul" offers breathtaking views of a vibrant bay with cerulean waters. **Seemingly carved from the rocks**, the villa's rooftop garden, lush with native plants, conceals the true nature of this luxurious modern home.

The sharply sloping site tested the architect's skill, evident as you descend the steep driveway between natural stone walls past the corten steel gate. You might choose to bypass the main entrance, walking under the kitchen to the terrace of the sleeping quarters. Gazing through binoculars from the kitchen at the chaotic dance of sailboats and other activities on the water is undeniably addictive.

The living room, adorned with a feature wall of book-matched marble, is bathed in light. Even in winter, it's a cozy retreat, with the fireplace chimney peeking through irises and spurflowers. The cleverly positioned Werner Pantone chandelier appears to hang in two separate spaces simultaneously.

Embracing the terraces around the infinity pool, **the villa provides protection** against the sometimes fierce mistral winds. The view over the infinity pool is not reserved for the terraces alone; from the master suite's bathroom, you can also enjoy the reflections on the pool's surface. This challenging design celebrates the Côte d'Azur in both color and form.

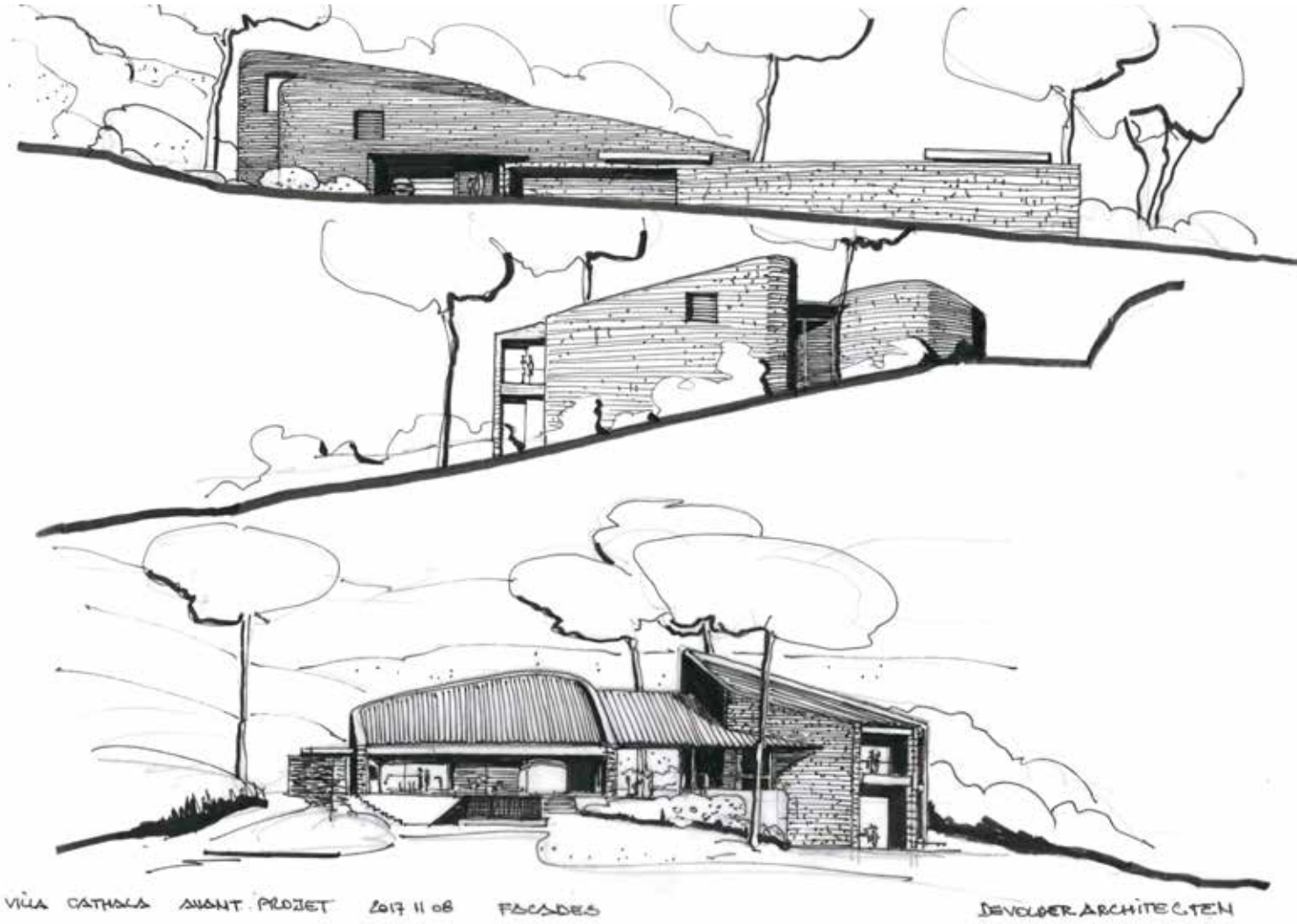






Villa "CATS", Sainte-Maxime

Villa CATS seamlessly blends with the landscape, its rounded stone forms echoing the nearby historic lighthouse. The aim was to **fully exploit the potential of the site**, transforming an underutilized existing villa into a vantage point capturing breathtaking views of the stunning peninsula where St-Tropez is nestled.



The overgrown shrubs and plants have been replaced with a landscaped garden of Mediterranean flora, carefully sculpted around ancient parasol pines. The challenges overcome during the project have enriched its outcome. ◀

▶ For more information: www.devolderarchitecten.be
Photo credits © xxxx



▶▶▶ For more information: www.oharchitecten.be
Photo credits © OH Architecten en © Stijn Knapen



Residence DWW, Wilsele

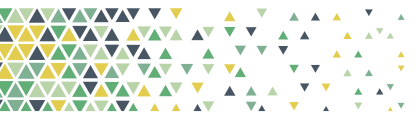


▶ For more information: www.oharchitecten.be
Photo credits © Nick Cannaerts en © Stijn Knapen





▶ For more information: www.oharchitecten.be
Photo credits © OH Architecten



TJIP Interior Architecture

Two exemplary seaview projects located along the Belgian coast

Founded in 2012 by Jakob Vyncke and Thomas Meesschaert, TJIP Interior Architecture operates out of Belgium with a dedicated team. They focus on residential, hospitality, and project development interiors both locally and internationally.

Their profound connection with the sea has led them to realize numerous weekend residences along the Belgian coast, honing their subtle and refined approach to color, materials, and textures.

This practice has allowed them to master the art of creating serene, tactile interiors that blend seamlessly with their surroundings, achieving a presence in absence that epitomizes their design philosophy.

Cosmopolitan Penthouse in Ostend, Belgium

In the heart of Ostend, the queen of Belgian seaside resorts, TJIP Interior Architecture has crafted a luxurious duplex suite with a metropolitan flair. This penthouse is a **testament to the intricate simplicity** that characterizes TJIP's design approach. The SKY Tower, a cosmopolitan landmark in Ostend, houses this duplex, where the interior design is transparent yet complex in its simplicity.

The penthouse boasts an open lounge area with impressive ceiling height and a hidden staircase leading to private rooms including an office, master bedroom, children's room, guest room, and three bathrooms. The design marries mathematical precision with a dedicated approach to light and texture, creating a high-level, sensible space. The 180-degree beach and sea views are mirrored in the choice of natural materials and calm tones, making the penthouse an ideal place for relaxation and entertaining. The result is **an instinctive interior** that immerses occupants in a serene atmosphere.



Oceanfront Apartment, Groenendijk, Belgium

On the Belgian seafront between Oostduinkerke and Nieuwpoort, TJIP Interior Architecture has designed an apartment for a family of three. This compact weekend residence on the second floor of a charming multi-family house prioritizes **spaciousness and a coastal experience**. The seamless flow from the entrance hall to the sofa creates a sense of one large, custom-made piece of furniture, enhancing both space and security.

Groenendijk, a unique stretch of seafront promenade free from high-rise buildings, provided the perfect setting for TJIP to transform a compact apartment into a special weekend residence. The corner apartment on the second floor offers uninterrupted views of the beach and sea, emphasizing the connection with the coastal environment. The design integrates color and materials with the surroundings, creating a cohesive and immersive living space that celebrates its seaside location. ◀

▶ For more information: www.tjip.be
Photo credits © Aurore Lameyre



TJIP Interior Architecture



François Privat Architecte, Uzès

NBJ Architectes, Montpellier

Elodie Nourrigat and Jacques Brion

Sports Hall of the Jean-Louis Trintignant Middle School in Uzès - France

Project realized for the Conseil Général du Gard assisted by SEGARD Montpellier, France

The challenge of building the Sports Hall Jean-Louis Trintignant in Uzès is to suggest a project that can work perfectly with the existing environment while creating optimal conditions allowing sports practice. The main focus is spot on the utility of the interior areas, as well as the lighting in order to offer comfort for both players and spectators.

One of the major stakes of the operation lies in its ability to generate urbanity. Thus the square front plays a primordial role, thought as an urban place; the square is intended to be homogeneous in its representation, uniting the pedestrian zone with the parking areas. Entirely glazed, the entrance of the sports hall offers a visual transversality from the square directly to the play area. At night it serves as a signal for visitors.

In this configuration, the impact of the Sports Hall on the immediate environment is reduced, matching the topography of the place, the gymnasium adapts to the constraints of the plot and the program. This position has the effect of unifying the building and at the same time offering it a unique and readable identity. The playfulness of the volumes is easy to read and accessible to all students.



This composition takes into consideration the entire volume of the Sports Hall. All the technical elements are hidden under the roof, integrating a fifth façade on the main volume. The attention we pay to an element often neglected but visible from the surroundings, shows our **concern to obtain a genuine integration**.

The internal organization of the Sports Hall is intended to be an example of simplification of the distribution elements for both public and users and tending towards a clear and displayed legibility of different spaces. The entrance, directly connected to the courtyard, offers a transition by the front square. A real exchange takes place between the inside and the outside. The glass panorama in continuity of the courtyard offers an impregnable view on games taking place inside, animating thus the surroundings of the hall thanks to sports practice. The sports ground is at the centerpiece of the venue while remaining clearly defined. At the same time the interior composition is such that the hall offers generous access to the stands, inviting people to participate in the events. Access to the dressing rooms is also provided by the wide staircase in the hall, all under the supervision of the reception placed strategically in the heart of the flows.

The goal is to create a **comfortable and welcoming atmosphere** in the gym, favoring clear colors in order not to obstruct spectators' vision of games. The welcoming and warm atmosphere is upgraded by the usage of wood. The natural light is essential for the healthy functioning of the sports hall, which is why the gymnasium is illuminated by skylights on the roof and by the openwork façade for optimal ambience and game conditions. ◀



For more information:
www.fprivat.fr / Photo credits © xxx
www.nbj-archi.com / Photo credits © xxx

François Privat Architecte
NBJ Architectes



Stephan Maria Lang Architects, Munich

A residence situated in Munich
House LW27, Munich, Allemagne



Stephan Maria Lang Architects introduce House LW27, a residence situated in Munich, Germany.

In a high class residential area, a large volume residence had to be constructed on a relatively small site. Located next to a sizeable outdoor pool, there was very little space for a garden. Therefore, a decision was made to create a rooftop garden to closely align with the concept of a zero-seal house, meaning sealed areas are given back to nature on the rooftop.



The side borders are hidden by a series of newly planted canopy trees, which provide natural sun protection. On ground level, an open floor plan flows freely from east to west along the pool. Floor to ceiling sliding windows allow inside/outside living throughout the year.



The upper floor features a bedroom area with ensuite bathrooms and separate dressing facilities, and a lush rooftop terrace with whirlpool that is reserved for the hardworking parents.

A sensual minimalistic atmosphere is carefully detailed with great attention to natural and artificial lighting, including a unique light feature in the entree that was designed and handcrafted by world renowned Austrian Bartenbach Light. ◀





▶▶▶ For more information: www.stephanmarialang.com
Photo credits © Sebastian Kolm

Stephan Maria Lang Architects



A1AR Architects

Fully Restored House Leading in Mariakerke Grandeur and Comfort with a Small Footprint

An old guinguette in Mariakerke, with its historic facade, was a key part of the streetscape. Restoring the house and adding thoughtful architectural interventions allowed old and new elements to enhance each other.

The house preserved many authentic features due to having few owners. Established in 1908, 't Rozenhof served traders delivering goods, unhitching horses, and staying overnight. The front rooms' murals, though damaged, testify to this history. One large mural, 2.3m x 5.8m, remains, depicting a "merry company" in the countryside. This area, once a café, is now a bureau, providing privacy while maintaining a street connection.

Authentic elements guided the choice of new materials. The new terrazzo floor in the hall, with its black-and-white mosaic band, evokes historical references. Veerle Verschooren, a glass artist, designed a glass window for the double door between the hall and the bureau. Rounded shapes throughout the interior, inspired by the café counter, are visible in the kitchen island, glass extension, and hall cabinet. Architecture inspires when it continues a story and breathes new life into it.

On the first floor, original doorframes were preserved, and a wardrobe was installed as a new divider, creating two smaller rooms without altering the original structure. One side now has two children's rooms, while the other houses the master bedroom and bathroom.

Under the roof, with original wooden beams, is a separate living unit for guests. "We enjoy lively gatherings; it suits the spirit of the property."





After demolishing rear buildings, the former cellar became a natural swimming pool. The white cubic structure, once a water reservoir, was preserved with a terrace below.

The slide and diving board, crafted from reclaimed materials, provide endless fun for children and refreshing dips for adults. When the sliding door opens in summer, the dining room seamlessly connects to the garden.

The kitchen and living room, adjacent and bathed in light, feature organic shapes and Ayous wood and brass elements, echoing the original inn's design. Despite the rear facing north, the glass extension never gets too warm, and the light is never too harsh.

Upstairs, sustainable Douglas wood floors with wall-to-wall planks offer a rough, historical look. Radiator covers and a vintage bathroom cabinet with a ceramic top add historical twists.



YOUR TERRAZZO, OUR MASTERPIECE



SEAMLESS AND AUTHENTIC



Together, we explore all possibilities for your interior.

info@venetiaans-terrazzo.be - Gildenstraat 30 - 3550 Heusden-Zolder

In the renovated and insulated 120-square-meter attic, a black wooden box contains a bathroom, dressing room, toilet, and kitchenette. Though initially planned as a master bedroom, it now serves as a guest area.

This restoration and **thoughtful integration of old and new elements** revive the lively spirit of the early 20th-century inn, creating a strong narrative for the future.

▶ For more information: www.alar.be
Photo credits © Jonah Samyn

A1AR Architects



THE **FUTURE** OF BUILDING



MESSE
MÜNCHEN



BAU

**January 13–17, 2025,
Messe München**

World's Leading Trade Fair for
Architecture, Materials, Systems

bau-muenchen.de/tickets

**SECURE
YOUR
TICKETS!**

glasstec

INTERNATIONAL TRADE FAIR FOR GLASS
PRODUCTION • PROCESSING • PRODUCTS

WE ARE GLASS

22 – 25 OCT 2024
DÜSSELDORF | GERMANY



#glasstec #WeAreGlass
glasstec-online.com

Voor meer informatie:
Plus d'informations :

Fairwise bv
Kerkstraat 108_ 9050 Gentbrugge
T: 09 245 01 68
info@fairwise.be www.fairwise.be



Messe
Düsseldorf

mipim[®]

The Global Urban Festival

Pre-opening 10 March

11-14 March 2025

Palais des Festivals, Cannes, France

MIPIM influences and accelerates the transformation of the built environment by crafting a unique, week-long urban festival in Cannes.

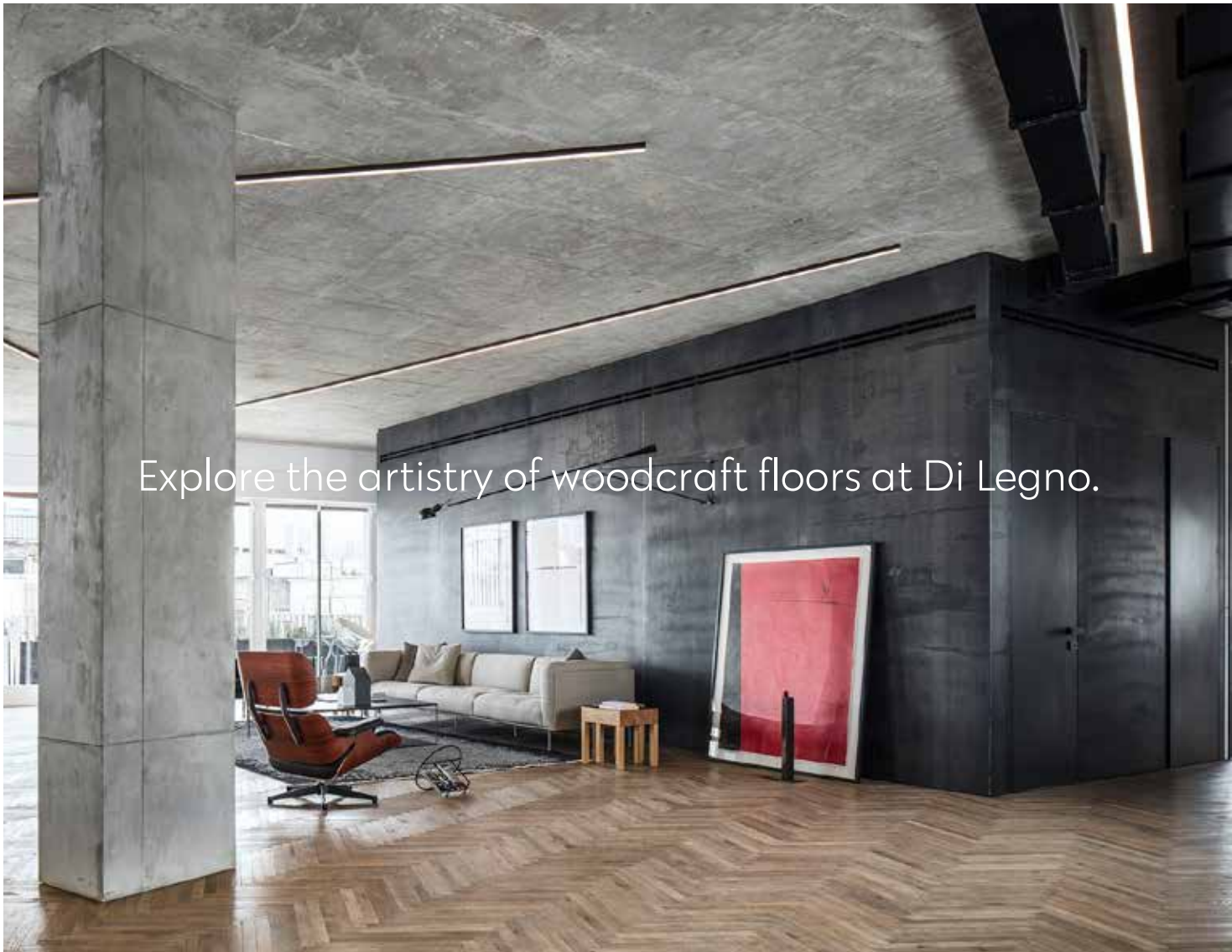
Face-to-face discussions, workshops and panels offer inspiration and thought-leadership, while creating opportunities to exchange experiences and drive business and professional growth.

As a reference point for the global real estate industry, MIPIM provides unique access to global capital and concrete solutions for making assets more sustainable and resilient in a rapidly changing world.

Be part of MIPIM

Built by
 In the business of
building businesses

mipim.com



Explore the artistry of woodcraft floors at Di Legno.

photography by Amit Geron, all rights reserved



Di Legno
Troisdorflaan 18
3600 Genk (BE)
+32 (0) 89 62 91 00
info@dilegno.be
www.dilegno.be

